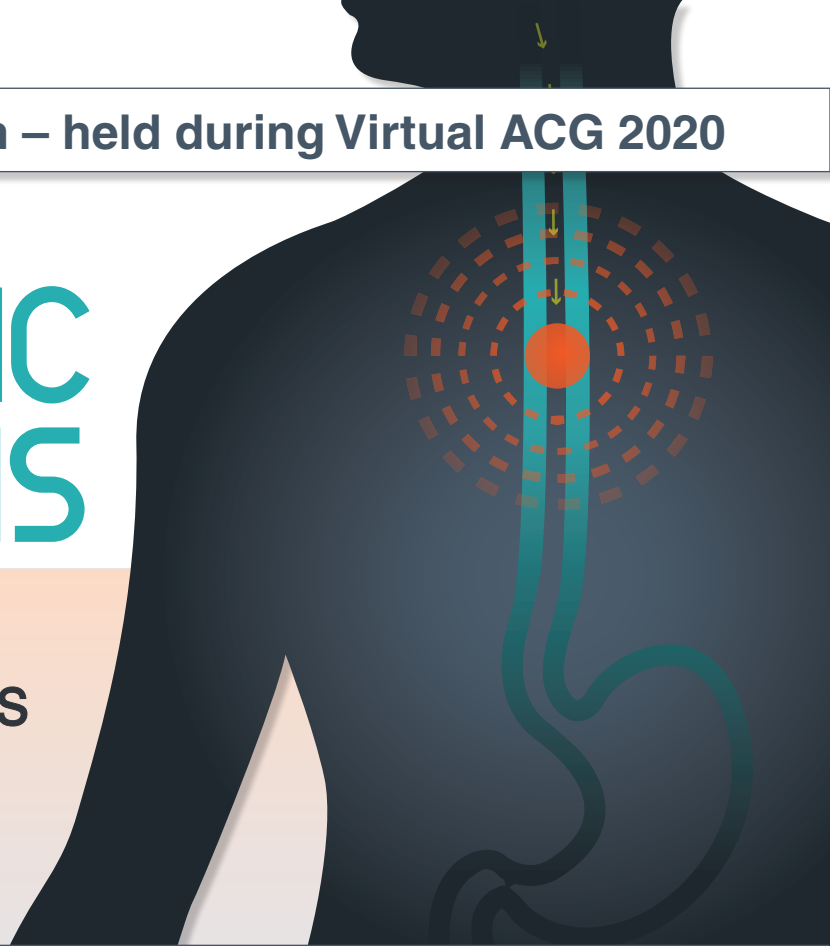


# EOSINOPHILIC ESOPHAGITIS

Updated Guidelines  
and Therapeutic Advances  
to Manage an  
Evolving Disease



**Friday, October 23 • 12:30 PM – 2:00 PM EDT**

## AGENDA

Introduction

A Closer Look at Pathogenesis of  
Eosinophilic Esophagitis (EoE)

Case Presentation

Overcoming Diagnostic  
Challenges in EoE

Case Presentation

Highlights of the New Guidelines  
and Treatment Options for EoE

Question and Answer

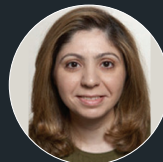
## ACTIVITY CHAIR



**Ikuo Hirano, MD**

Professor of Medicine  
Northwestern University  
Feinberg School of Medicine  
Chicago, IL

## FACULTY



**Mirna Chehade, MD, MPH**

Associate Professor of Pediatrics  
and Medicine  
Director, Mount Sinai Center for  
Eosinophilic Disorders  
Icahn School of Medicine at Mount Sinai  
New York, NY



**Evan S. Dellon, MD, MPH**

Professor of Medicine  
Adjunct Professor of Epidemiology  
Center for Esophageal Diseases  
and Swallowing  
Division of Gastroenterology and Hepatology  
University of North Carolina School  
of Medicine

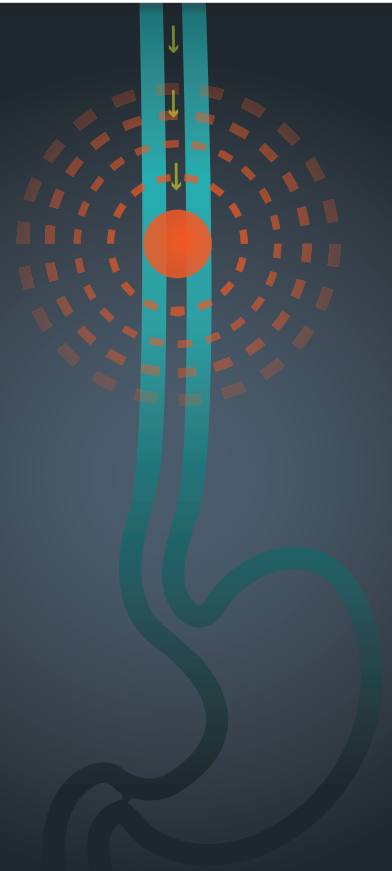
For more information visit:

<https://acgmeetings.gi.org/industry-sponsored-satellite-symposia/>

## OVERVIEW

In this case-based educational activity, expert faculty will provide guidance on the criteria for diagnosing EoE as well as review the updated guideline recommendations and treatment options for the optimal management of patients with EoE.

Add this CME Virtual Satellite Symposium to your Virtual ACG 2020 schedule!



## LEARNING OBJECTIVES

Upon successful completion of this activity, participants should be better able to:

- Evaluate the pathophysiology of EoE including the factors contributing to its increased prevalence.
- Assess the criteria for the diagnosis of EoE including considerations to aid the differential diagnosis.
- Review the updated guideline recommendations and treatment options for the optimal management of patients with EoE.

## TARGET AUDIENCE

The intended audience for this activity is gastroenterologists and other health care professionals involved in the management of patients with eosinophilic esophagitis.

Vindico Medical Education is accredited by the Accreditation Council for Continuing Medical Education to provide continuing medical education for physicians.

Vindico Medical Education designates this live activity for a maximum of 1.50 *AMA PRA Category 1 Credit(s)*<sup>™</sup>. Physicians should claim only the credit commensurate

with the extent of their participation in the activity.

In accordance with the Accreditation Council for Continuing Medical Education's Standards for Commercial Support, all planners, teachers, and authors involved in the development of accredited content are required to disclose to

the accredited provider their **relevant financial relationships**. Relevant financial relationships will be mitigated and disclosed to the activity audience.

Faculty, topics, program schedule, and credit hours are subject to change. Audiotaping or videotaping is prohibited without written permission from the program committee.